

GAPDH Rabbit Polyclonal Antibody

Catalog Number: AT003

Product Package

Cat. No.	Unit Size	Concentration	Storage
AT003	100 µL	1 mg/mL	Short term: 4°C Long term: -20°C Avoid freeze/thaw cycle

Introduction

Glyceraldehyde 3 phosphate dehydrogenase (GAPDH) is well known as one of the key enzymes involved in glycolysis. GAPDH is constitutively abundant expressed in almost cell types at high levels, therefore antibodies against GAPDH are useful as loading controls for Western Blotting. Some pathology factors, such as hypoxia and diabetes, increased or decreased GAPDH expression in certain cell types.

Storage Condition and Buffer: 1 mg/ml in PBS, pH 7.4, containing 0.02% sodium azide and 50% glycerol. Store at +4°C short term. Store at -20°C long term. Avoid freeze/thaw cycle.

Application: WB IHC ICC/IF FC.

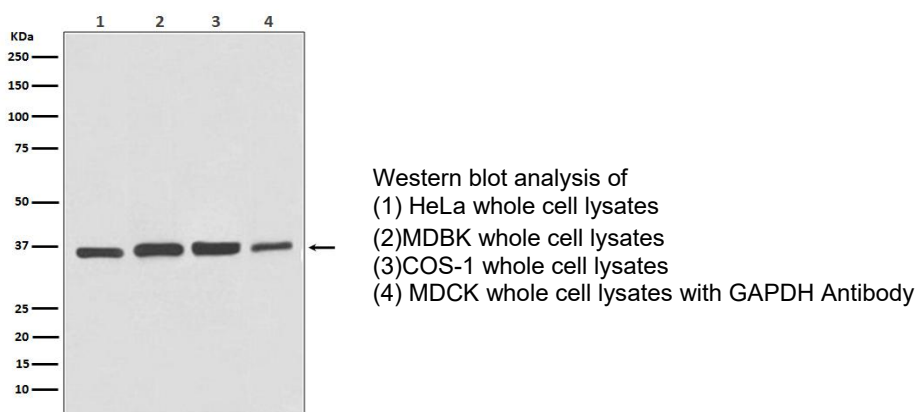
Reactivity: Human Mouse Rat Chicken Cow Dog Monkey

Dilution: WB 1:3000~1:10000 IHC 1:100~1:250 ICC/IF 1:100~1:250

Purification: Affinity-chromatography.

Specificity: GAPDH Antibody detects endogenous levels of total GAPDH.

Immunogen: A synthesized peptide derived from human GAPDH



For Research Use Only.